

Vacation and celebrate at Vähä-Kiljava

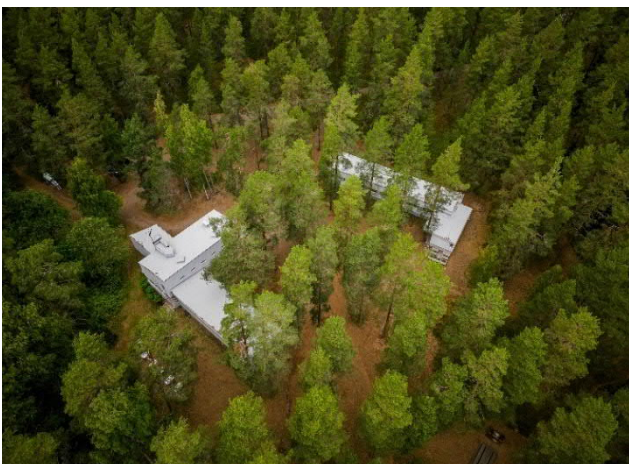
Come and stay in a hidden architectural gem in the middle of unspoiled Finnish nature! Pick berries and mushrooms, take walks in the forest, enjoy a Finnish sauna in the evenings.

Vähä-Kiljava, a retreat for all SAFA members, architects and students of architecture, is located in Hyvinkää. It faces the clear Lake Sääksjärvi on the Salpausselkä esker, formed by the Ice Age, in the middle of a beautiful pine forest. Vähä-Kiljava is only a 50 km drive from Helsinki centre, easily accessible by car, bus, or even bike.

The Kasino, an International Style or Functionalist two-story main building and designed by architect Hugo Harmia in 1939, has hostel-style accommodation for 18 people in two-person cabins with bunk beds, plus a separate room for four people as well as a shower room on the same floor. The first floor has a guest room for up to four people with its own entrance and toilet. The main building is well-suited for weddings, birthdays, and other celebrations. It has a spacious dining / meeting room for ca 70 people, a kitchen, and a separate sitting room with a fireplace. Rooms in the Kasino can be rented individually or the building can be rented in its entirety. You can bring your own sheets and towels, or you can also rent them. The Lodge next to the Kasino houses double rooms, a kitchen, a shower room, and a sitting room. Besides the wide beach, the lakeshore features two saunas.

In the forest surrounding the Kasino there are 25 cottages. Most are owned by SAFA and rented out on long-term contract to SAFA members; a few are owned by members. Aalto, Autere, and Puutalo Cottages can be rented weekly during the summer months, May through August.

On the other side of the lake, there is another International Style building, a former tuberculosis sanatorium, designed by Jussi Paatela in 1938. The fresh air of the pine forest was considered the only available treatment for tuberculosis. In the far end of the lake, there was another sanatorium, Nummela, later called Röykkä hospital, designed in 1903 by Magnus Schjerfbeck in Jugend Style. It is now a resort. Rajamäki Industrial and Alcohol Museum and Rajamäki village are reminders of the days when the government alcohol monopoly built another Functionalist masterpiece, Rajamäki Church, by Erkki Huttunen, in 1938.



Kasino and the Lodge



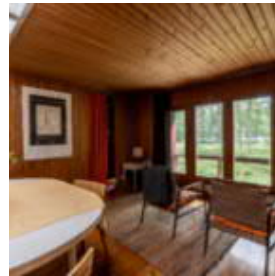
Vähä-Kiljava beach

Summer 2025 in Vähä-Kiljava

SAFA members have a chance to rent the Aalto, Autere, and Puutalo Cottages for a week or more during the summer season from May to August. The weekly rentals are from Sunday to Sunday. During September and October, the cottages can be reserved for a day. Foreign architects and students are welcome to rent!

The rooms in the Kasino and Lodge are rented for a week or day from May to September. Summer 2025 calendar, reservations and rental fees will be published in the spring.

The Rental Cottages and Rooms



Autere Cottage

During the summer season you can rent Autere Cottage for a week or longer. In August-October it is available also for single days. Please note that reservations run from Sunday 14:00, with departures by noon the following Sunday.

- the cottage is well suited for families with children
- beds for 5 people
- kitchen: dishes and cooking utensils for 5 people, coffee maker, electric water kettle, micro, fridge with a freezer unit
- living room with a fireplace, electric heaters
- covered terrace
- outdoor toilet, no indoor toilet or shower
- no running water, drinking water from the nearby well
- pets allowed
- toilet paper and paper towels included
- please bring your own linens (you can also rent them)

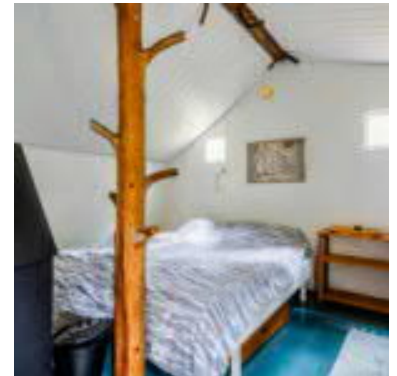


Aalto Cottage

During the summer season you can rent Aalto Cottage for a week or longer. In August-October it is available also for single days. Please note that reservations run from Sunday 14:00, with departures by noon the following Sunday.

- beds for 6 persons
- kitchen: dishes and cooking utensils for 6 people, oven, coffee maker, electric water kettle, micro, fridge with freezer unit
- living room with a fireplace, electric heaters
- a large studio
- covered terrace
- outdoor toilet, no indoor toilet or shower
- drinking water from the nearby well
- pets allowed
- toilet paper and paper towels included
- please bring your own linens (you can also rent them)

Puutalo Cottage



During the summer season you can rent Puutalo Cottage for a week or longer. In August-October it is available also for single days. Please note that reservations run from Sunday 14:00, with departures by noon the following Sunday.

- beds for 3-4 persons (2 beds 90x200 cm, alcove bed 120x185 cm)
- kitchen: dishes and cooking utensils for 4 people, coffee maker, electric water kettle, micro, fridge with freezer unit
- electric heater
- outdoor toilet, no indoor toilet or shower
- drinking water from the nearby well
- pets allowed
- toilet paper and paper towels included
- please bring your own linens (you can also rent them)

The Lodge

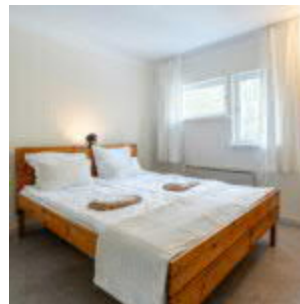
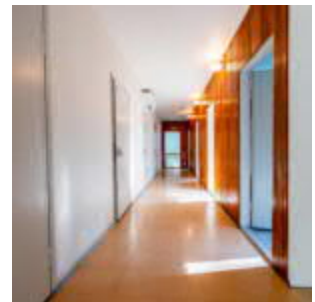


The rooms in the Lodge can be rented for a week or longer. Please note that reservations run from Sunday 14:00, with departures by noon the following Sunday.

- room 1: 3-4 beds = bunk bed and extendable bed
- room 2: 2-3 beds = bed and extendable couch
- room 4: 2-3 beds = bed and extendable bed

- room 5: 2-3 beds = beds and extendable couch
- room 6: 3-4 beds = bunk bed and extendable couch
- pets are allowed only in rooms 5 and 6. Entrance with pets only to the rooms from the end of the corridor.
- shared kitchen
- shared shower and toilets
- electric heaters in the rooms

Kasino



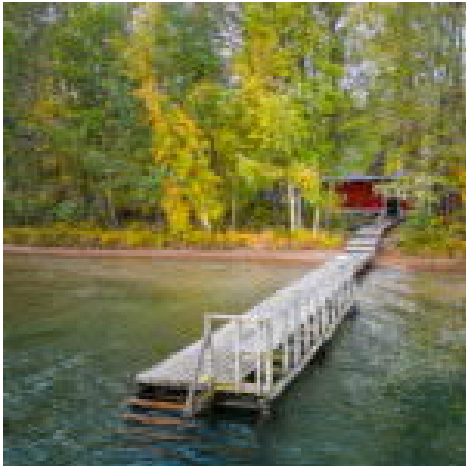
The Kasino, the International Style two-story main building, designed by architect Hugo Harmia in 1939, is perfect for weddings, birthdays, and other celebrations. Rooms in the Kasino can be rented individually, or the building can be rented in its entirety. Please note that reservations run from Sunday 14:00, with departures by noon the following Sunday.

- beds for 22 people
- spacious dining / meeting room for ca 70 people, kitchen, and a separate sitting room with a fireplace
- you can hire a caterer, a local restaurant Lounas- ja tilausravintola Makupata or Cafe Muru (contact info below) or cook yourself
- pets are allowed only in the downstairs suite

Accommodation in the Kasino

- downstairs suite: 3-4 beds (queen size bed and extendable couch), dishes, and cooking utensils for 4 people, coffee maker, electric water kettle, micro, fridge with freezer, hot plate. Dish washing in the main kitchen.
- upstairs suite: 4 beds (queen size bed and bunk bed)
- upstairs cabins: bunkbeds for 2
- electric heaters in the cabins

Old sauna



You are welcome to enjoy the old sauna and its dock on the lake during the public sauna hours. Women and men have separate turns. The sauna is heated during the summer every day except on Mondays. The sauna accommodates 7 people. SAFA members also have a possibility to reserve a private two-hour sauna turn (30 €). Please contact the housekeeper.



New sauna

You can reserve the new sauna for two hours or for the whole evening (3PM-11PM). A whole evening reservation is made on the calendar; two-hour turns are reserved with the caretaker at least three days before. Confirm the reservation by paying to SAFA account FI46 1521 3000 0095 24. Add to the payment the reference: Kiljava sauna / date. Please bring the receipt with you for the caretaker to check.

The new sauna is right on the shore and has its own dock and grill place. The sauna accommodates 10 people at a time. There is hot and cold water for washing. If you wish, you can heat the sauna by yourself; there is firewood in the shed next to the sauna.

Hourly fees and info: Caretaker Tiina Mäki, phone 050 371 9604

The whole evening (3PM-11PM) can be reserved on the sauna calendar (published in the spring 2025).

Info

SAFA office, Katri Laakso
phone +358 40 169 8889
kiinteistot@safa.fi

Keys to the cottages

Caretaker Tiina Mäki
phone +358 50 371 9604
tiina.hill@hotmail.com

You can order meals and supplies for your parties at the Kasino

Lounas- ja tilausravintola Makupata

Contact: Johanna Ekholm
+358 400 844041
johanna@juhlapalvelut.fi

Cafe Muru

Contact: +358 50 370 6996

This is how to find Vähä-Kiljava

By car

Take the Helsinki–Hämeenlinna road 3 (E12) to exit 13 (Route 1311), Nurmijärvi. Turn left at the end of the exit ramp and continue through Nurmijärvi centre to Rajamäki. After ca 8 km turn left (west) to Kiljava, Röykkä at the traffic circle. Follow Kiljavantie road. After ca 3 km, there will be a large boulder on the right and then a sign for a swimming beach. Soon after that, turn right onto Sääksjärventie road, which is a wide, paved road leading to the swimming beach with signs for the Hyvinkää and Nurmijärvi Congregation Centres. After 100 metres turn right again onto the continuation of Sääksjärventie road with a sign "SAFA Vähä-Kiljava." After 300 metres, turn left into the driveway (sign SAFA). Follow it down the slope to the Kasino.

Coming from the direction of Hämeenlinna: turn from the Hyvinkää - Hanko road to Rajamäki.

By public transportation:

Take a bus from Kamppi Station in Helsinki to Kiljava. Some of the buses run via Klaukkala and Röykkä, some via Nurmijärvi and Rajamäki. Get off at Sääksi Beach stop. (Matkahuolto search: Sääksi, Kiljavantie). From the stop, it is a ca 750 metre walk to the Kasino. Bus timetables:

<https://www.matkahuolto.fi/>

<https://korsisaari.fi/>